

Key Stage 4 Curriculum
Oak Tree School
2026

Jade Pathway



OAK TREE
SCHOOL

Dear students,

This booklet outlines what you will study in years 10 and 11 at Oak Tree School. The Jade pathway is specially designed to suit lots of different needs and interests, and will be taught by one teacher for most of your lessons. Key Stage 4 is the first steps into adulthood and we look forward to seeing you all succeed over the next two years.

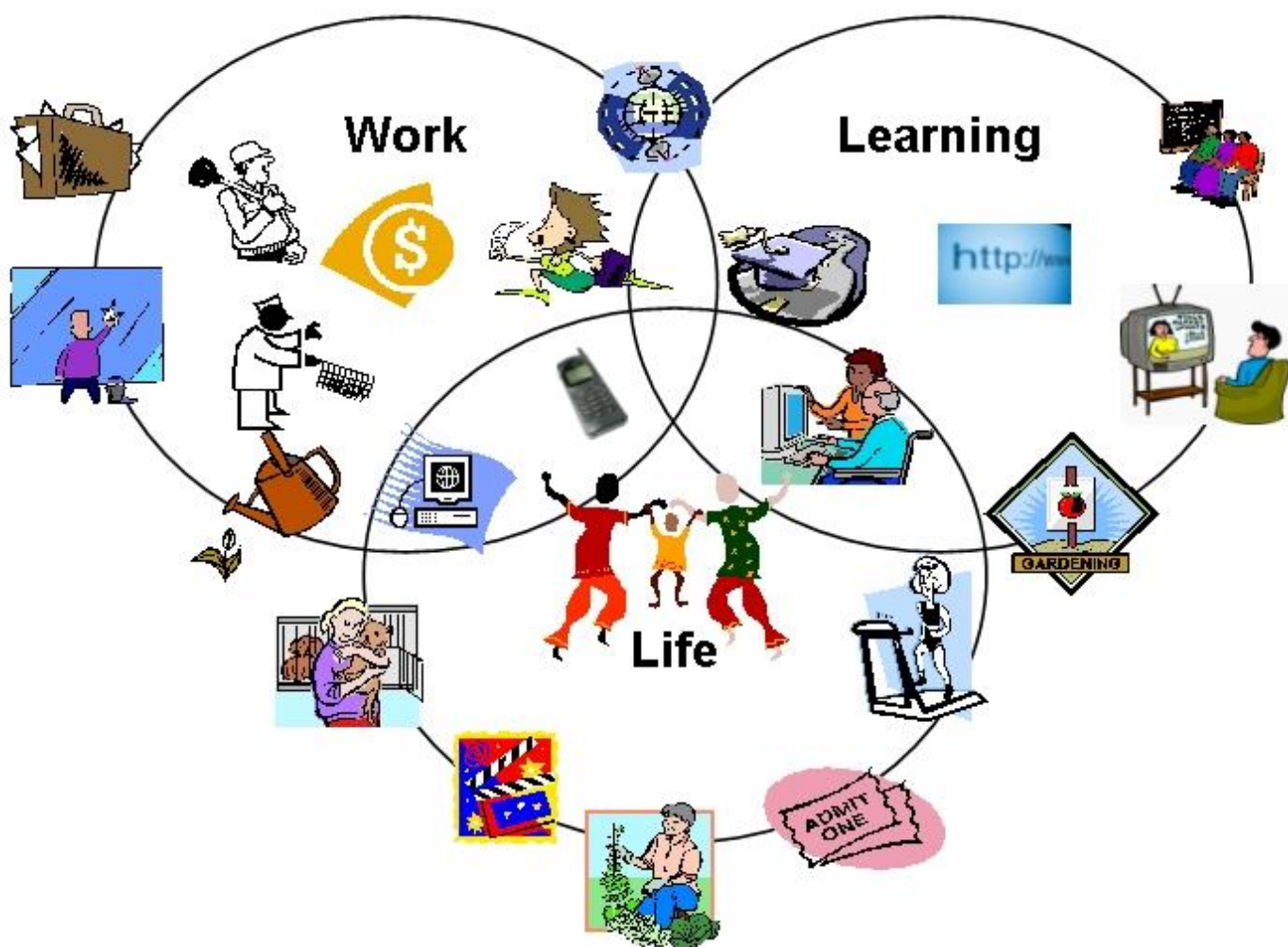
Oak Tree School SLT



OAK TREE
SCHOOL

What you will study

- English
- Maths
- Level 2 certificate in Employability Skills
- PSHE
- Home Skills
- Digital Literacy
- Duke of Edinburgh
- Arts Award
- Work related learning and careers
- PE/ Leisure



English

Entry Level

Students on the Jade pathway may be able to functional skills papers, depending on their progress across Key Stage 4.

Overview of content

The OCR Entry Level Certificate in English qualification is primarily targeted at KS4 students working at a level below that required for a grade 1 at GCSE. It is designed as a one- or two-year course for learners who are then graded at three sub-levels (level 3 is the most difficult) before embarking on a route towards Functional Skills. All assessments take place internally and tasks can be tailored to the learner's needs and interests.

How it provides skills for the future

OCR's Entry Level Certificate in English encourages learners to read fluently and write effectively. At Entry Level, learners will develop the skills to read and understand non-fiction and literary texts. They will develop the skills to be able to demonstrate an appropriate control of Standard English and to write grammatically correct sentences. Learners will also develop confidence in using spoken language to communicate and to effectively participate in group activities. This specification enables learners to progress at their own pace so that they can develop their knowledge and skills and be put forward for the assessment when they are ready. It is designed to be accessible and relevant, and provides learners with recognition for their achievements.



Assessment methods

Reading (40%): two tasks – 'understanding a non-fiction text', and 'understanding a literary text'. Internally assessed/externally moderated.

Writing: two tasks – 'informative writing' and 'imaginative writing'. Internally assessed/externally moderated.

Spoken language (20%): discussion or role-play. Internally assessed/externally moderated.

Mathematics

Entry Level

Students on the Jade pathway may be able to functional skills papers, depending on their progress across Key Stage 4.

Overview of content

AQA Entry Level Certificates are a nationally recognised qualification that gives students the opportunity to achieve a certificated award.

Subject content has 8 components:

- properties of number
- the four operations
- ratio
- money
- the calendar and time
- measures
- geometry
- statistics

How it provides skills for the future

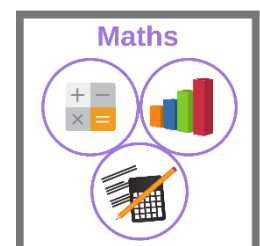
ELC provides basic and relevant numeracy skills and is suitable for students of all ages. The specification is co-teachable with other qualifications, to suit students who are studying both qualifications. Our ELC aims to build students' confidence in maths.

Assessment method

Internal exam for each component throughout the course work.

The duration of each examination is 45 minutes.

One component is assessed without the use of calculator, while the remaining seven components permit the use of calculator.



Employability

Level 2 certificate

Overview of content

This qualification has been designed give students opportunity to develop essential personal development and employability skills along with specific vocationally-related skills in a simulated or real work environment.

Students must achieve 15 credits for the certificate. These will be made up of units in:

- Animal care
- Horticulture
- Hospitality and Catering
- Health and Social Care

*These units may change depending on the interests of the group.

How it provides skills for the future

The AIM Qualifications Level 2 Certificate in Employability Skills (and related 603/6265/0) provides essential, transferable skills to help learners secure and sustain employment. Key areas include communication, teamwork, problem-solving, time management, and job-seeking techniques.

Assessment method

Internal Assessment by Portfolio of Evidence



PSHE

SEND Association Curriculum

Overview of content

The curriculum covers key areas including respectful relationships, consent, personal boundaries, online safety, puberty and body changes, sexual health, and the law relating to relationships.

How it provides skills for the future

The curriculum promotes independence, self-advocacy, and informed decision-making, enabling our young people to develop the knowledge and skills needed to build healthy relationships and keep themselves safe.

Assessment method

Students are assessed against the PSHE association SEND framework criteria by tutors.

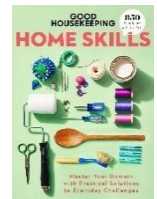


Home Skills

AQA Unit Awards

Overview of content

These lessons each week will cover a range of skills needed for future independence in the home. These include home maintenance such as cleaning, identifying hazards at home, budgeting and electrical safety. Units covered will reflect the needs of the group.



How it provides skills for the future

The home skills program will provide skills for the future including, independence, budgeting, staying safe at home.

Assessment methods

Class work is internally assessed for the AQA awards.

Digital Literacy

Digital Functional Skills (DFSQ) Entry Level OR AIM level 1 award

The level students achieve will depend on their skills at the start of year 10.

Overview of content (DFSQ)

- Unit 1 Using Devices and Handling Information
- Unit 2 Creating and Editing
- Unit 3 Communicating
- Unit 4 Transacting
- Unit 5 Being Safe and Responsible On-line

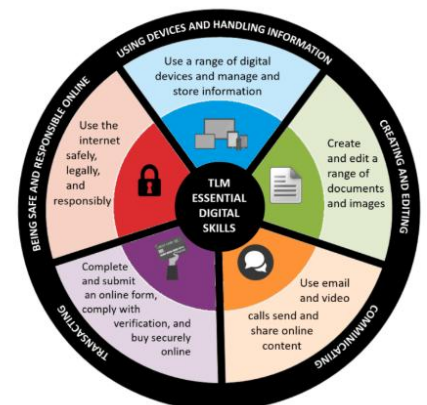
How it provides skills for the future

Learners to strengthen their IT skills for life and skills for work, The qualification is designed to meet the requirements of the Digital Functional Skills DfE content frameworks and is designed for learners with some experience of using digital devices and the internet who wish to strengthen their information technology skills.

This will equip learners with the IT capabilities to complete learning tasks in school and build a foundation for experiences beyond Oak Tree.

Assessment methods

Practical on-screen assessment and online examination. Both externally set and marked by the exam board.



Duke of Edinburgh

Bronze Award

Overview of content

- Volunteering (3 months): Helping the community, environment, or animals.
- Physical (3 months): Improving health and fitness through sport or activity – there are lots of choices.
- Skills (3 months): Developing a new talent or improving an existing one (e.g. cooking, coding, gardening, candle making, chess)
- Expedition (2 days, 1 night): Planning and completing a self-sufficient, team-based adventurous journey (this is very flexible for those that are not ready for those nights away)

How it provides skills for the future

The Duke of Edinburgh (DofE) Bronze Award is a voluntary, non-competitive, and personalised program focusing on building confidence, resilience, and life skills such as teamwork, problem-solving, and independence.

Assessment methods

Accumulating hours in 3 sections and a final expedition event.



Work Related Learning and Careers

Overview of content

Students will experience a vast range of work related learning across Key Stage 4. This will be happening through careers lessons, enterprise projects and work experience both in school and in external work experience placements.

How it provides skills for the future

- **Skill Development:** Students gain practical skills like time management, IT systems, organisation, and professional communication.
- **Skill transference:** Students are able to use skills they have developed at school in different contexts, but with safe adult support initially.
- **Career Clarity:** It allows students to test industries, helping them decide if a particular career path suits them.
- **Increased Employability:** Work experience makes students stand out to employers by demonstrating initiative and real-world experience.
- **Confidence & Maturity:** Interacting in a professional environment helps students gain independence and maturity.
- **Networking:** Building connections with industry professionals can lead to future job opportunities or references.

Assessment methods

Students will be assessed against their engagement in the processes and in their ability to generalise skills learnt- these criteria will be set by Oak Tree School.



Arts Award

Explore- Entry Level 3

Overview of content

Arts Award Explore encourages children and young people to experience different art forms and artists, and develop their own creativity. Along the way they record what they've achieved and enjoyed and share it with others.



How it provides skills for the future

Through Arts Award, learners will achieve a national qualification that will build confidence through nurturing their individual interests, while also equipping them with life skills such as communication teamwork and creativity that will support their education and future employment.

Assessment methods

To achieve Arts Award Explore, young people create a personal arts log, in a format of their choice, presenting evidence of:

- taking part in a range of arts activities – including a personal response about what has inspired them
- researching the work of artists or craftspeople and arts organisations
- creating a piece of art work
- sharing with others what they have enjoyed and achieved through completing their Arts Award

Arts Award

Bronze (Level 1)

Overview of content

4 Areas to cover:

- Take part in the arts- Where we will experience many different types of art. Including shows, galleries and music opportunities.
- Review an arts event/experience- After our experience we will use different methods to record our thoughts and anything we learnt during that experience.
- Research an artist or craftsman- They will have the opportunity to choose their own interest in a person within the arts to research their art and what they do.
- Pass on arts skills to others- Using their research they will create a workshop, idea or presentation to deliver to a chosen group of people where they share and inform others of the skills they have learnt.

How it provides skills for the future

- Leadership skills- this will be beneficial for jobs and leadership roles in the future.
- Vocalising their own opinion- This skill will be useful for being able to express their own views but also listen to others.
- Working as a team- Important for future work and experiences, being able to listen to others, respond and disagree politely. Reflection
- Researching
- Communication
- Performing arts knowledge and skills



Assessment methods

Portfolio- using different methods of recording such as images, videos, writing and created documents on the computer etc.