



# News Hub

Oak Tree School

December 2022

## Opening September 2023

Located in Winnersh, Oak Tree School is an exciting collaborative project for Reading and Wokingham. Our new school will provide a safe and happy learning environment for 150 learners, from Year 1 to Year 13, with an Educational Health and Care Plan (EHCP) for Autism Spectrum Conditions (ASC) and associated complex needs including Speech, Language and Communication Needs (SLCN) and/or Social Emotional and Mental Health (SEMH).

## Site Progression



OAK TREE  
SCHOOL

Woodward Close, Winnersh, Wokingham, RG41 5LP

Oak Tree School is being built by off-site construction specialist Reds10 who have a great reputation for working closely with the Wokingham community to minimise the impact of construction works and have been responsible for successfully delivering several local projects like the recent Dinton Activity Centre in Winnersh and the award-winning expansion of Addington SEND School in Woodley.



## Reds10 site update



**Louis Mottley**  
Project Manager, Reds10

The Project is progressing forward in line with our programme; with an incredibly busy summer which saw our 3 phased building installed and groundworks conducted. Additionally, Reds10 have made real tangible progression to our Section 38 road works, as well as its draining services being constructed. Furthermore, the interior and exterior of the building have undergone significant visual improvements in recent months; external cladding, flooring and furniture have been fitted, At the heart of this project is its future pupils and staff, which makes it even more special when you see design decisions really coming to fruition, which results in a great learning environment starting to take shape on site.

We are closing into the latter stages of the project, where our next challenge sees the build having many moving parts, whether that be tapping into the local infrastructure and making utility connections, to constructing soft and hard landscaping, sports pitches and the main entrance and car parks. Each level of detail shares the same level of importance across the project. It is important to get the basics to the complex on point to ensure a smooth handover is conducted, and Maiden Erlegh Trust can be mobilised on time for the schools opening date.



# Maiden Erlegh Trust update

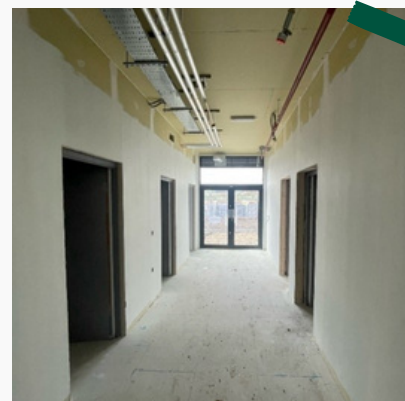


**Lisa Saunders**  
Director of Operations

As we move forward to the final stages of the Oak Tree School construction phase, we move our attention to the exciting logistics of the building usage and internal classroom design including furniture and curriculum resourcing. To this end, the Trust are coordinating weekly meetings with key staff to explore the best opportunities for the student and staff experience in the building.

We are also planning the first intake of students in partnership with each local authority and devising the recruitment strategy to secure the very best staff in the market locally. We have partnered with 3 establishments who specialise in recruitment within the sector and are very pleased with the progress and interest of Oak Tree school to date both externally, and internally from our current staff cohort.

At each site visit attended, the progress amazes me as to the difference week to week. It is testament to the project management teams that the construction remains very much on track for practical completion and the attention to detail throughout the design and build, is of an exceptionally high standard. We are focussing currently on the energisation of the building and thereafter, the connectivity of vital core infrastructure which is a key milestone within the project.



**Abi Davis**  
Headteacher

## Introducing the Headteacher

We are delighted to finally be able to confirm that we have appointed a Headteacher to lead Oak Tree School.

Abi Davis joins us from Upton Grange School in Slough, an independent special school for children with ASD. She brings with her experience of opening a new special school and leading that through its growth phase and we are excited by her plans for the development of Oak Tree School.

We will be beginning the recruitment process for roles at Oak Tree School, both teaching and non-teaching after Christmas so do keep an eye out and apply if there is a role that you are interested in.





# CGI School Fly-through

REDS10 have supplied a CGI fly-through of our new school to give an idea of how the school will look when it is finished next year.

To access it, please click on the **play button** below.



## Site Visit

**Jonathon Peck** (Chief Executive Officer) and **Andy Johnson** (Executive Director of Education), at Maiden Erlegh Trust, carried out a site visit recently and could see the very tangible progress that has been made by REDS10 on the new school building. There has been significant visual progress to the project with cladding, flooring and even furniture being fitted. We look forward to our next site visit.



## Socials

If you would like to keep up to date with the progress being made at Oak Tree School, you can find us on...

- @Oak Tree School
- @OakTreeSchool1
- @MaidenErleghTrust
- @MaidenErleghAcademy Trust

Follow us

## Recruitment Event

In the new year we will be looking to make key appointments so please come and talk to us if you are interested in working at Oak Tree School. There will be staff on hand at the event, to talk to about the opportunities available.

- Tuesday 17 January 2023
- 4:30pm until 6:00pm
- Hamilton School, 135 Bulmershe Road, Reading, RG1 5SG

Vacancies within the Trust can be found on the Maiden Erlegh Trust website [HERE](#).

## Register your interest...



If you are interested in receiving regular updates including our newsletter, details of open events and recruitment days, please complete our expression of interest form [HERE](#).

# School Uniform

To support our culture of high expectation, Oak Tree School will be a uniform school. Our intention is that the uniform will be both practical and comfortable.

Schools which have clear expectations about dress and appearance are more successful than those which do not. We expect students to present themselves smartly for their working day and ask that parents support us in this, by providing the correct uniform items and supporting appearance expectations.



*"Nurturing potential, encouraging independence"*

## Where to find us?

